

Lowndes County, GA Zoning Map October 2012

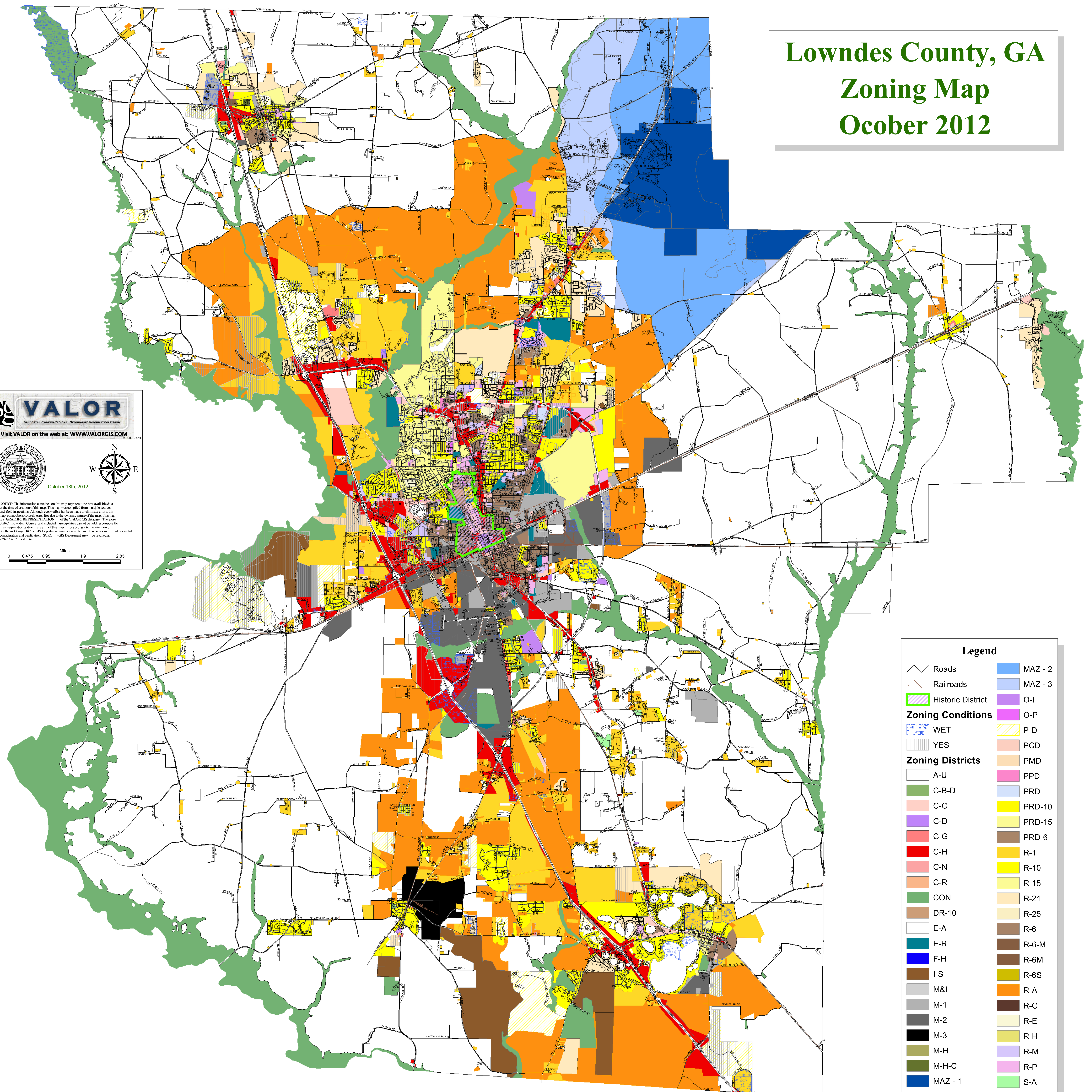
VALOR
VALORIA LOWNDES REGIONAL GEOGRAPHIC INFORMATION SYSTEM

Visit VALOR on the web at: WWW.VALORGIS.COM

LOWNDES COUNTY GEORGIA
BOARD OF COMMISSIONERS
1825
October 18th, 2012

NOTICE: The information contained on this map represents the best available data at the time of creation of this map. This map was compiled from multiple sources and field inspections. Although every effort has been made to eliminate errors, this map cannot be held liable for any errors due to the dynamic nature of the map. This map is a GRAPHIC REPRESENTATION of the VALOR GIS database. Therefore, SCRC, Lowndes County and individual municipalities cannot be held responsible for misinterpretation and/or misuse of this map. Errors brought to the attention of South on Georgia Inc. - GIS Department may be corrected in future versions after careful consideration and verification. SCRC - GIS Department may be reached at 252-333-5277 ext. 142.

0 0.475 0.95 1.9 2.85 Miles



Legend

| | |
|--------------------------|---------|
| Roads | MAZ - 2 |
| Railroads | MAZ - 3 |
| Historic District | O-I |
| Zoning Conditions | |
| WET | P-D |
| YES | PCD |
| Zoning Districts | |
| A-U | PPD |
| C-B-D | PRD |
| C-C | PRD-10 |
| C-D | PRD-15 |
| C-G | PRD-6 |
| C-H | R-1 |
| C-N | R-10 |
| C-R | R-15 |
| CON | R-21 |
| DR-10 | R-6 |
| E-A | R-6-M |
| E-R | R-6M |
| F-H | R-6S |
| I-S | R-A |
| M&I | R-C |
| M-1 | R-E |
| M-2 | R-H |
| M-3 | R-M |
| M-H | R-P |
| M-H-C | S-A |
| MAZ - 1 | |